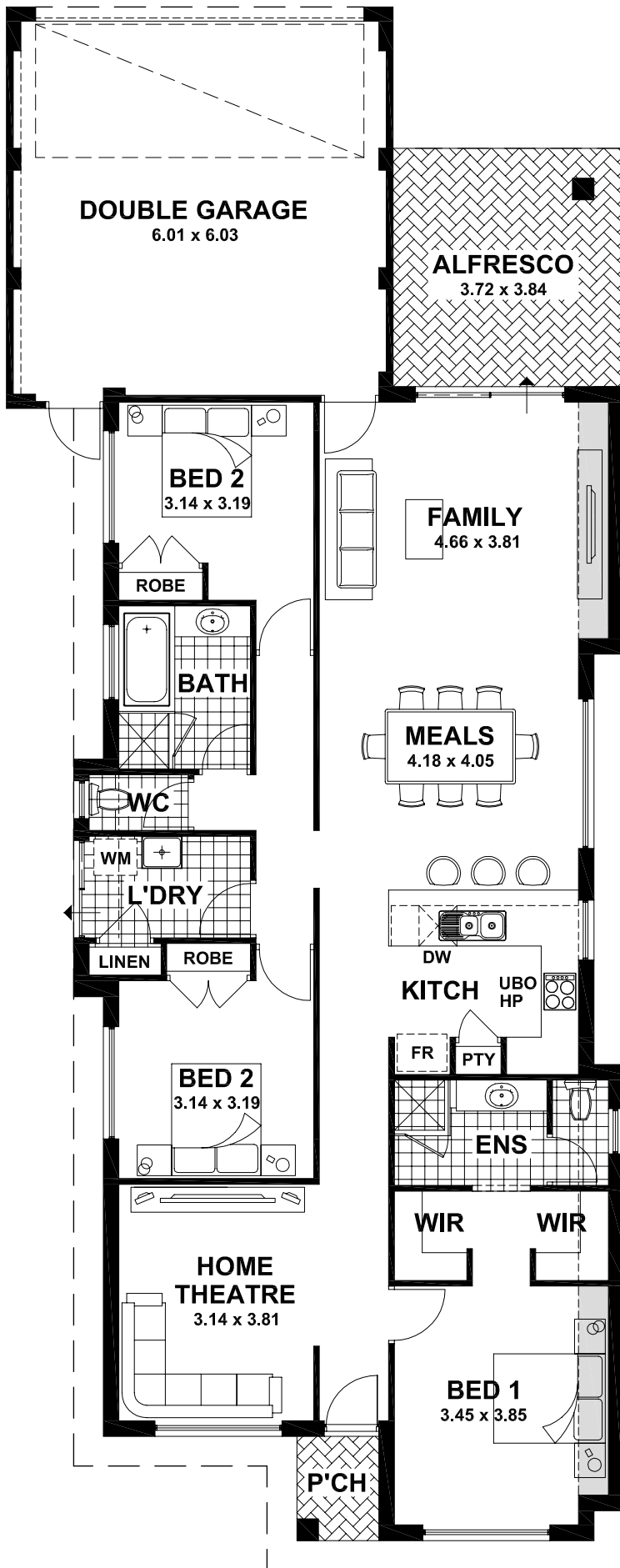


THE RIMFIRE



Standard Inclusions

- * FLOOR TILING TO LAUNDRY, BATHROOM, ENSUITE & WC
- * EUROPEAN STAINLESS STEEL APPLIANCES
- * DOUBLE WALK-IN ROBES TO MAIN BEDROOM
- * BRISTLE CLAY ROOF TILES
- * CHINA HAND BASINS
- * PIVOT SHOWER SCREENS
- * SOFT CLOSE DRAWERS TO KITCHEN
- * DOORS TO ALL ROBES
- * PAVED ALFRESCO AREA
- * DOUBLE LOCK-UP GARAGE WITH REMOTE OPERATED SECTIONAL DOOR
- * DOUBLE POWER POINTS THROUGHOUT
- * SEPARATE HOME THEATRE
- * LINEN CUPBOARD WITH 4 SHELVES
- * DISHWASHER PROVISION
- * TV RECESS TO FAMILY
- * POSTFORMED TOPS TO KITCHEN & BATHROOMS

AREAS

HOUSE:	146.32m
GARAGE:	39.29m
ALFRESCO:	14.28m
PORCH	2.21m
TOTAL:	202.10m ²
PERIM:	55.88m
LENGTH:	24.71m
WIDTH:	9.95m

The 'RIMFIRE' - Standard Specifications

General

- HIA Fixed Price Contract.
- HIA Housing Indemnity Insurance.
- 100mm floor slab with F62 mesh to main house.
- Reinforced footings.
- Double clay brick construction from our standard range.
- Brick paved driveway to 1.0m, porch and alfresco from our standard range.
- Powder coated aluminium windows and sliding doors with flyscreens and ventlocks from our standard range.
- Bristle clay roof tiles - from our standard range.
- Cream mortar joints - raked, rolled or flush.
- White-ant treatment.
- Double lock-up garage.
- Remote sectional garage door to front with 3 handsets.
- Front and rear garden tap.
- 135 litre gas 5 star storage hot water.
- Gas point to family room.
- Linen cupboard with 4 lined shelves.
- Built-in robes with double doors to minor bedrooms.
- Double walk-in robes to master bedroom.
- Quality door furniture throughout.
- Ample light and all double power points.
- Exhaust fan to bathroom, ensuite, kitchen flued to external air.
- TV point to family room and home theatre.
- 2 hard-wired smoke detectors.
- Metal corner angles to exposed corners of internal walls.
- 10 metre sewer connection from last point.
- Painting to ceilings, doors, door frames, eaves, fascia, gutters, downpipes and meter box.
- Entry door with double deadlock from our standard range.
- R3.0 Batt ceiling insulation.
- Site-survey and re-peg of your block.
- Cost of plans and specifications.
- Building Licence and Water Corporation fees.

NOTE: Ceramic tiles, brick and paving selections, laying patterns, paint colours, laminate selections, plumbing accessories, bathroom accessories and other items not specifically detailed are from the builders standard range.

Kitchen

- Quality stainless steel cooktop & oven.
- Dishwasher provision.
- Satin chrome handles to cupboard doors.
- Chrome flickmixer to sink.
- 1 ¾ bowl stainless steel sink.
- Soft close drawers & cabinets.
- Pantry with 4 lined shelves.

Bathrooms

- Laminated cupboards to ensuite and bathroom.
- Vitreous china hand basins to ensuite and bathroom.
- Clear glazed pivot shower screens to ensuite and bathroom.
- Chrome finish designer tapware and accessories to ensuite, bathroom and WC.
- Dual flush toilets.
- Privacy latches to bathroom, master bedroom, ensuite and WC.
- Floor tiling included to WC, bathroom and ensuite.
- 2000mm high wall tiling to showers.
- Skirting tile to WC, bathroom and ensuite.
- P.C. \$44.00m2 retail purchase allowance.

Laundry

- 45L stainless steel trough with white metal cabinet.
- Auto washing machine taps to laundry.
- Floor tiling and skirting tile included plus 2 rows over trough.
- P.C. \$44.00m2 retail purchase allowance.

Bonus Inclusions

- Paved alfresco area under main roof.
- Separate theatre.
- Robes with double doors to bedrooms 2 & 3.
- Double W.I.R's to bedroom 1.
- Separate WC to ensuite.



29 Crompton Road, Rockingham WA 6168 PH: 9592 3177 Web: www.shelford.com.au

